

EcoStat
Shower thermostat universal for exposed installation
Surfaces: **Chrome** Article Number: **13122000**



Description

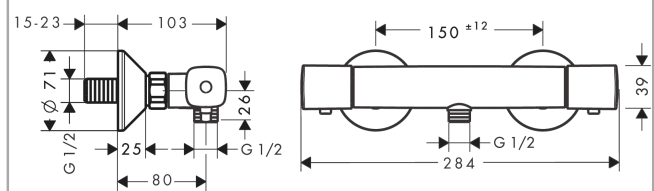
product features

- 1 function
- centre distance: 150 ± 12 mm
- EcoStop button limits the water consumption to 10 l/min
- maximum flow rate at 3 bar: 17 l/min
- flow rate hand shower connection at 3 bar: 16 l/min
- thermostat cartridge, ceramic valve 180°
- safety lock at 40° C
- temperature limitation adjustable
- non-return valve
- with silencer
- connection type: s-shaped connections
- connection dimension: DN15
- min. operating pressure: 1 bar
- max. operating pressure: 10 bar
- dirt filter included

Product image



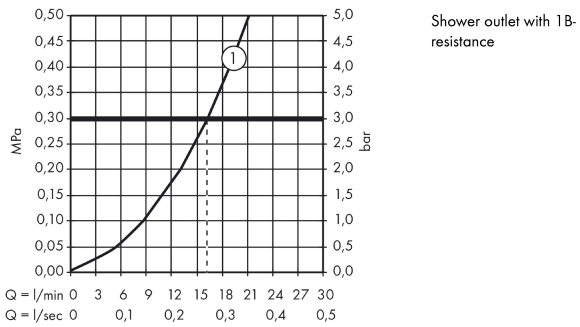
Scale drawing



Ecostat
Shower thermostat universal for exposed installation
 Surfaces: **Chrome** Article Number: **13122000**



Flowchart

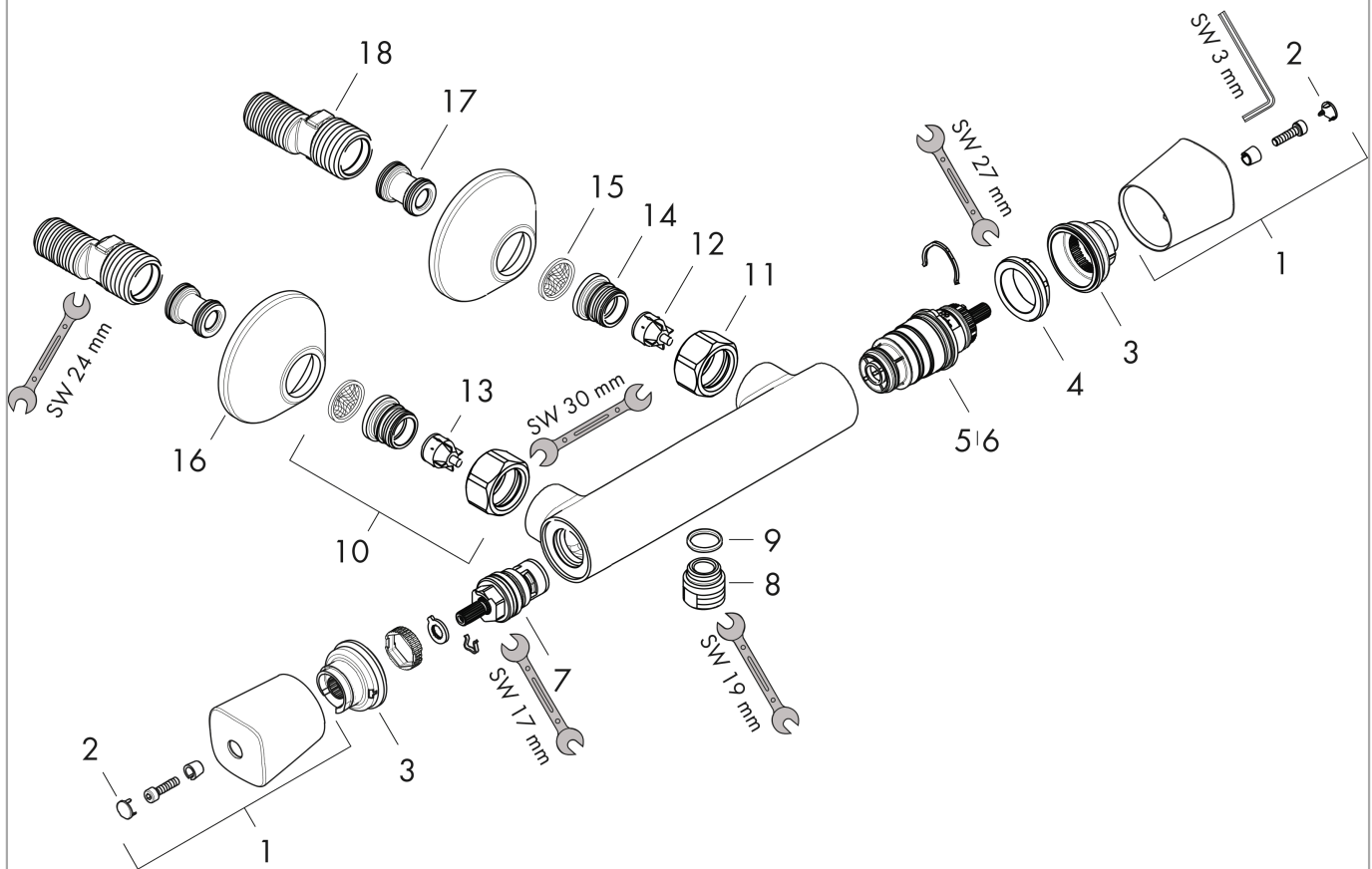


Ecostat
Shower thermostat universal for exposed installation
 Surfaces: **Chrome** Article Number: **13122000**



Exploded Drawing

Year of production: >01/14



Ecostat

Shower thermostat universal for exposed installation

Surfaces: **Chrome** Article Number: **13122000**



Spare part list

Year of production: >01/14

Pos.	Description	Article Number	Price	PU
1	handle	95780000	-	1
2	cover cap	95433000	-	1
3	safety set for temperature control	98916000	-	1
4	nut	98913000	-	1
5	thermostat cartridge	98282000	-	1
6	cartridge for exchanged connections	92373000	-	1
7	shut off unit	94149000	-	1
8	connecting thread	95392000	-	1
9	O-ring 14x2	98129000	-	1
10	set of unions	94285000	-	1
11	set of nuts	96157000	-	1
12	non return valve	96737000	-	1
13	non return valve (pressure-resistant up to 2 MPa)	93136000	-	1
14	O-ring 17x1,5	98137000	-	1
15	filter packing	96922000	-	1
16	escutcheon Ø 70 mm	94135000	-	1
17	noise reduction	96429000	-	1
18	set of S-unions (±12 mm)	94140000	-	1
a	set of S-unions (±32 mm)	98592000	-	1
b	pushbutton	92848000	-	1