

HL62H/1

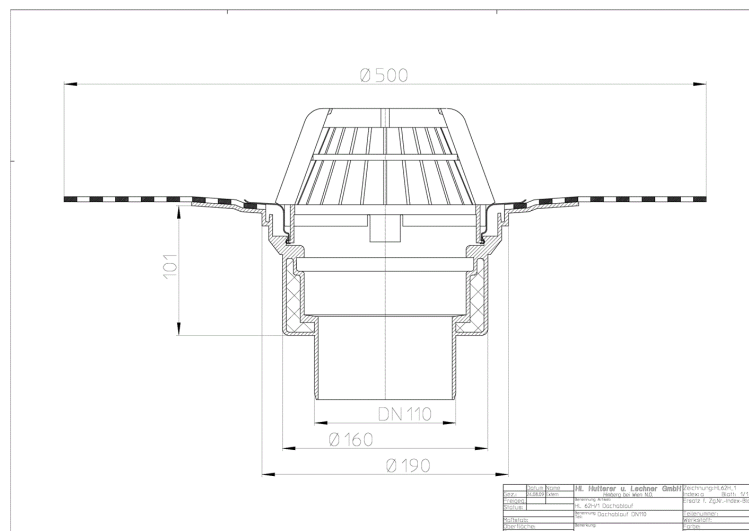
flat-roof drain DN110 with bitumen membrane



flat-roof drain DN110 vertical with insulated drain body, bitumen membrane d 500 mm for perfect and easy lap-joint waterproofing with bituminous membranes and domed plastic grate d 180 mm. Comes with lot cover.



techn. drawing



MAIN DATA

spare parts



HL062.1E
domed plastic grate



HL170
flat grate d 150mm

attachment



HL160
gravel guard d 150mm



HL170
flat grate d 150mm



HL175
domed grate stainless steel



HL635
drainage grating 362x362mm/240x240mm aluminium



HL66
grating d 145mm sleek/(316) stainless steel frame 150x150mm/138x138mm (316) secured



HL01058D
tailback gasket for stainless steel flange 220x155mm



HL062B.3E
adapter



HL160
gravel guard d 150mm



HL66.1
grating d 145mm sleek/(316) stainless steel frame 150x150mm/138x138mm (316) secured and slip-resistant



HL01058D
tailback gasket for stainless steel flange 220x155mm



HL062B.3E
adapter



HL160
gravel guard d 150mm



HL66.9
grating d 145mm fluted/148x148mm/138x138mm



HL062B.3E
adapter



HL160
gravel guard d 150mm



HL67
grating round d 145mm sleek/(316) stainless steel frame d 155mm/d 145mm



HL01058D
tailback gasket for stainless steel flange 220x155mm



HL062B.3E
adapter



HL160
gravel guard d 150mm

Alternatives



HL62.1H/1
flat-roof drain DN110 with bitumen membrane, heated (10-30W/230V)



HL62BH/1
flat-roof drain DN110 with bitumen membrane. Walkable - 148x148mm/137x137mm

Extensions



HL350
extension 130mm/d 145mm



HL350.1
extension 180mm/d 145mm with flange and waterproofing kit HL84



HL350.1H
extension 180mm/d 145mm with bitumen membrane



HL65
extension 300mm/d 125mm with clamping ring



HL65H
extension 300mm/d 125mm with bitumen membrane



HL65P
extension 345mm/d 125mm with PVC collar

TECHNICAL DATA

material	PP	installation height	100mm
dimension	DN110	grate frame	
capacity	10,7 l/s	grate	Laubfangkorb d 145mm
weight	1,83	load class	
EAN	9003076801626	inlet	
		standards	

PACKAGING DATA

carton

unit	1 [pcs.]
weight	2,28 [kg]
EAN/pack.	9003076801626
height/width/depth	180/385/385 [mm]
volume	0,0266805 [m ³]

single use pallet

unit	60 [pcs.]
weight	147 [kg]
EAN/pack.	
height/width/depth	2100/800/1200 [mm]
volume	2,016 [m ³]

DOWNLOADS

Foto Print	HL62H_1_pr.tif	max.
Foto Web	HL62H_1_B.jpg	640x480/300dpi
Foto Symbol	HL62H_1_gr.jpg	150x150/72dpi
techn. drawing	HL62H_1_pr.tif	max.
techn. drawing	HL62H_1_a.pdf	pdf
CAD	HL62H_1_2_a.dxf	dxf
example of use	HL62Hx1_PZ.pdf	pdf